

DA 17K Tunnel Inlet

Technical Info



1 Product description

The tunnel inlet is used as an air inlet in houses with Tunnel ventilation or Combi-Tunnel ventilation.

The tunnel inlet can be mounted directly in interior walls or sandwich panels.

The tunnel inlet is available both with high-insulated inlet flaps made from PVC (polyvinyl chloride) with insulation and with semi-insulated inlet flaps made from PVC (polyvinyl chloride).

The inlet is delivered with the inlet flaps installed. Regulation set is installed on-site.

Opening range into the house is 370 mm.

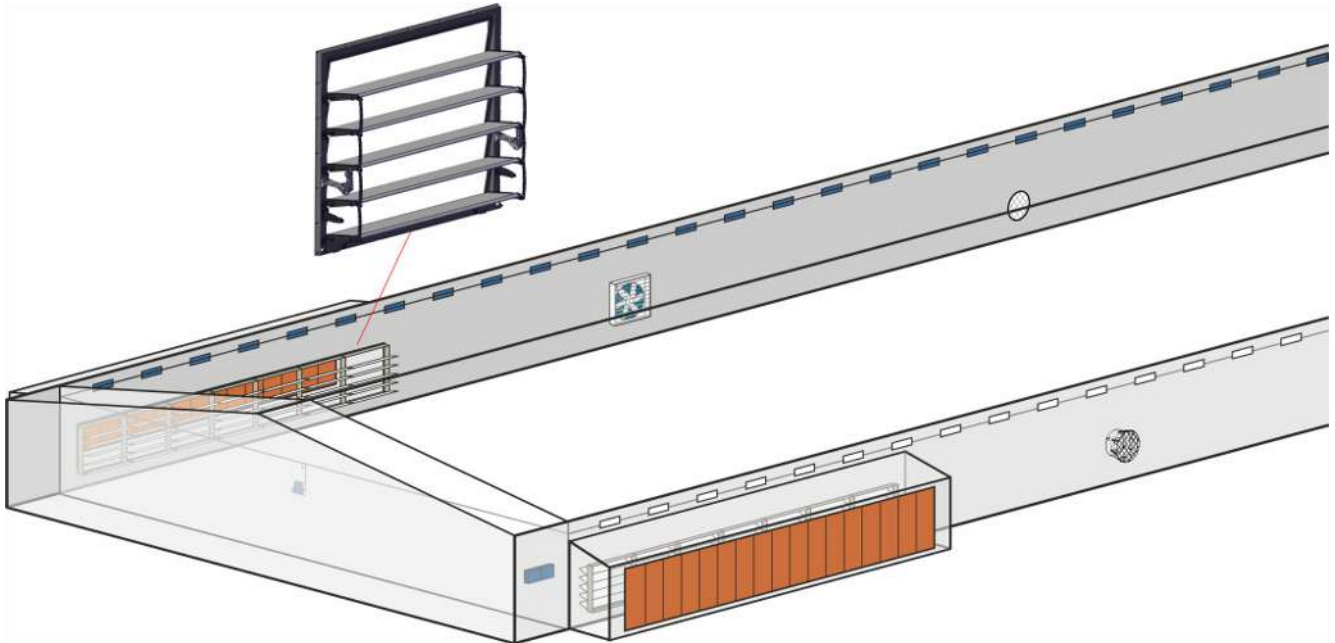


Figure 1: Drawing of tunnel inlet in 1 row.

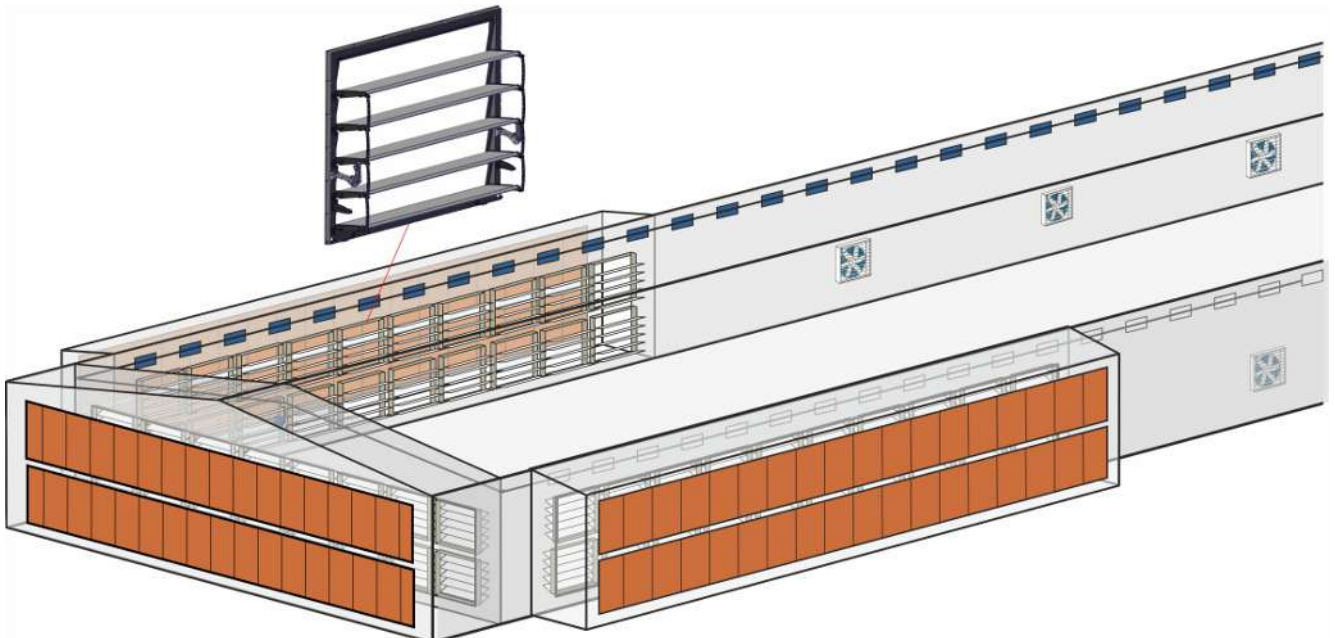


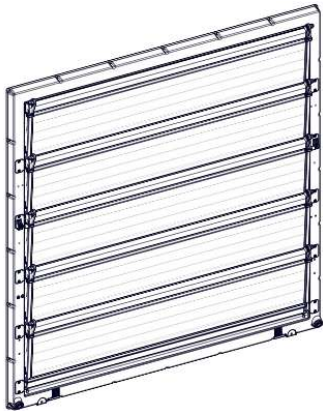
Figure 2: Drawing of tunnel inlet in 2 rows.

2 Product survey

Inside position
(the air moves from left to right)



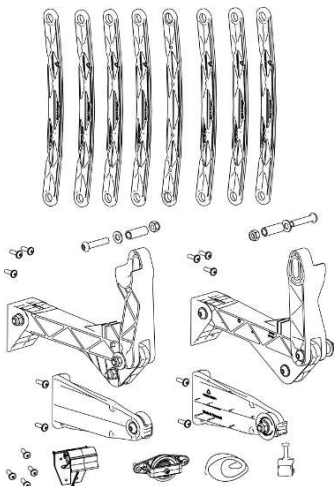
Outside position
(the air moves from left to right)

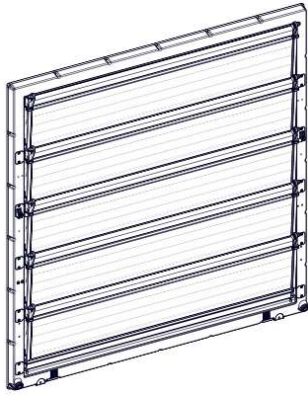


433700 DA 17K tunnel inlet, highly insulated

DA 17K tunnel inlet with high insulating property is used for mounting on a wall where insulation is required.

The mounting parts are used for assembling the tunnel inlet.

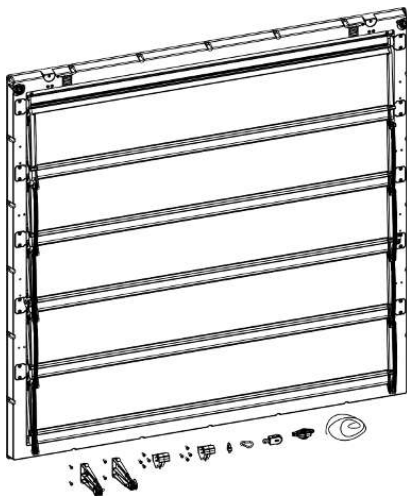
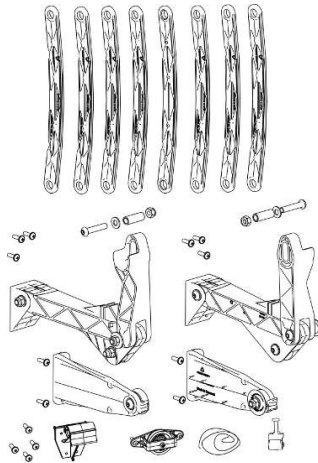




433701 DA 17K tunnel inlet, semi-insulated

DA 17K tunnel inlet with semi-insulating property is used for mounting on a wall where insulation is not necessary.

The mounting parts are used for assembling the tunnel inlet.



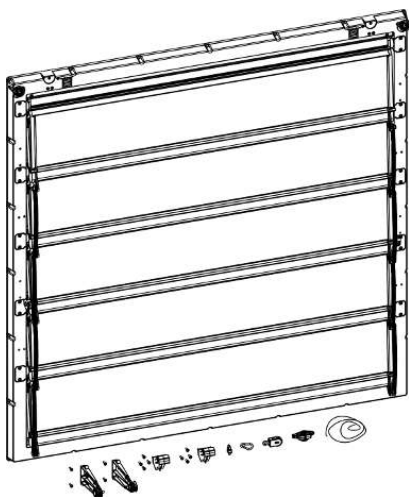
433716 DA 17K tunnel inlet, highly ins. outside

DA 17K tunnel inlet, outside is highly insulated and used for external assembly on the wall.

When you mount the tunnel inlet on the outside the inlet does not take up space inside the livestock house. It also prevents the animals from getting a grip of the strings or connectors.

The mounting parts are used for assembling the DA 17K outside.

DA 17K outside must always be protected against wind and weathering – e.g. by placing the tunnel inlets in combination with either cooling pads, light trap flex or the like.



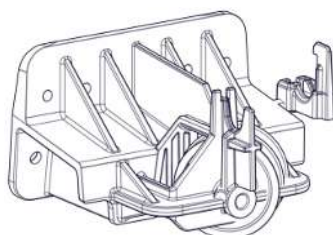
433717 DA 17K tunnel inlet, semi ins. outside

DA tunnel inlet, outside is used for external assembly on the wall where insulation is not necessary.

When you mount the tunnel inlet on the outside, the inlet does not take up space inside the livestock house. It also prevents the animals from getting a grip of the strings or connectors.

The mounting parts are used for assembly of the DA 17K outside.

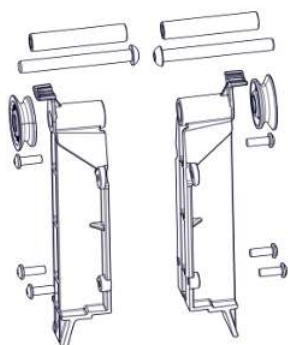
DA 17K outside must always be protected against wind and weathering – e.g. by placing the tunnel inlets in combination with either cooling pads, light trap flex or the like.



433710 Wall inlet bracket for pull rod

The bracket is used when the tunnel inlet is mounted inside the house and when a pulling system above the inlet is desired, instead of, as normally, below the inlet.

2 per inlet.



433711 Tunnel inlet, support bracket

The bracket is used when the tunnel inlet is mounted inside the house and when a pulling system above the inlet is desired, instead of, as normally, below the inlet.

1 per inlet



433703 DA 17K Tunnel inlet, bird net

Net protects against birds.

Net size = 17x17 mm.

Dimensions = 1390x1390 mm

1 per inlet.

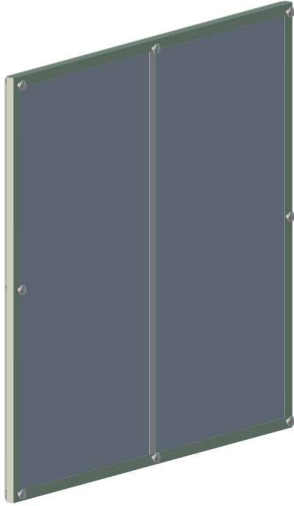


433702 Tunnel inlet screw kit

Used for mounting of the tunnel inlet.

Contains 24 4.8x70 tapping screws.

1 sets per inlet.

**433720 DA 17K insulation plate**

The plate is used to minimize draft and heat loss during cold periods, when the tunnel inlet is not in use.

The plate should always be used if the dimensioned outside temperature is less than -10°C .

Supplied with mounting set and mounting guide.

One per inlet.

3 Technical data

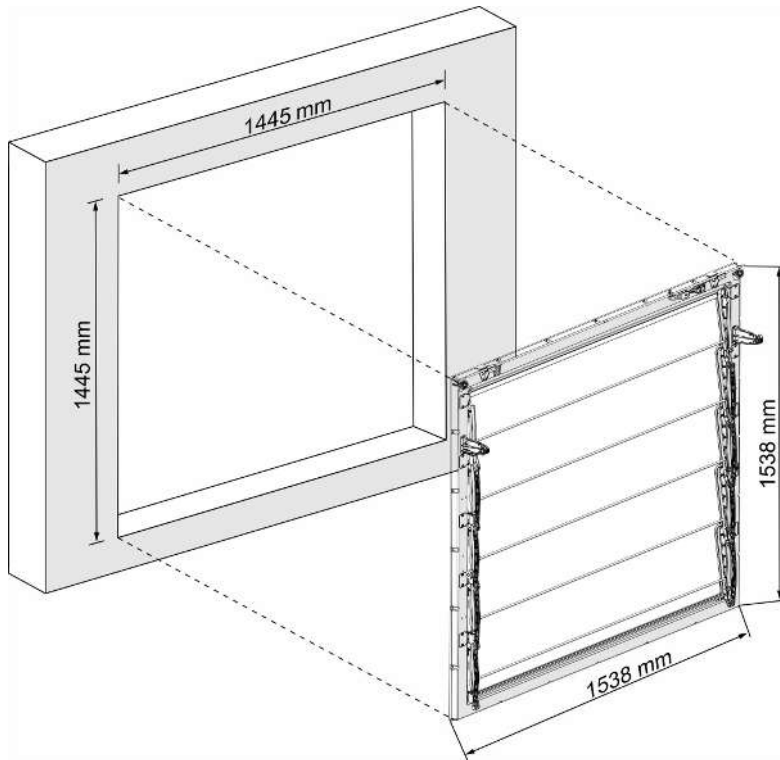
If the inlet is installed with a bird net, the air output decreases by 5 %. Air output values in brackets include the net.

		Tunnel inlet highly insulated	Tunnel inlet semi insulated
Mechanical			
Material		PVC	
Springs		Stainless steel	
Color - inlet frame		RAL 7024 (gray)	
Color - inlet flap		RAL 9010 (white)	RAL 7035 (light gray)
Net size	mm	1390x1390 with 17x17 net	
Tensile force	N/kg	204/21	
Tensile length	mm	600	
Output			
Air output at - 5 Pa	m ³ /h	13100 (12400)	
Air output at - 10 Pa	m ³ /h	18500 (17600)	
Air output at - 15 Pa	m ³ /h	22600 (21500)	
Air output at - 20 Pa	m ³ /h	26100 (24800)	
Air output at - 30 Pa	m ³ /h	32000 (30400)	
Environment			
Temperature, operation	°C (°F)	-40 to +50 (-40 to +122)	+5 to +50 (+41 to +122)
Storage temperature	°C (°F)	-40 to +65 (-40 to +149) – and protected against direct sunlight.	
Ambient humidity, operation	% RH	0-95 % RH	
Shipment			
Dimensions HxWxD per layer	mm	1600x1600x125	
Weight per piece	kg	25	
Number of inlets per pallet	pcs.	17	

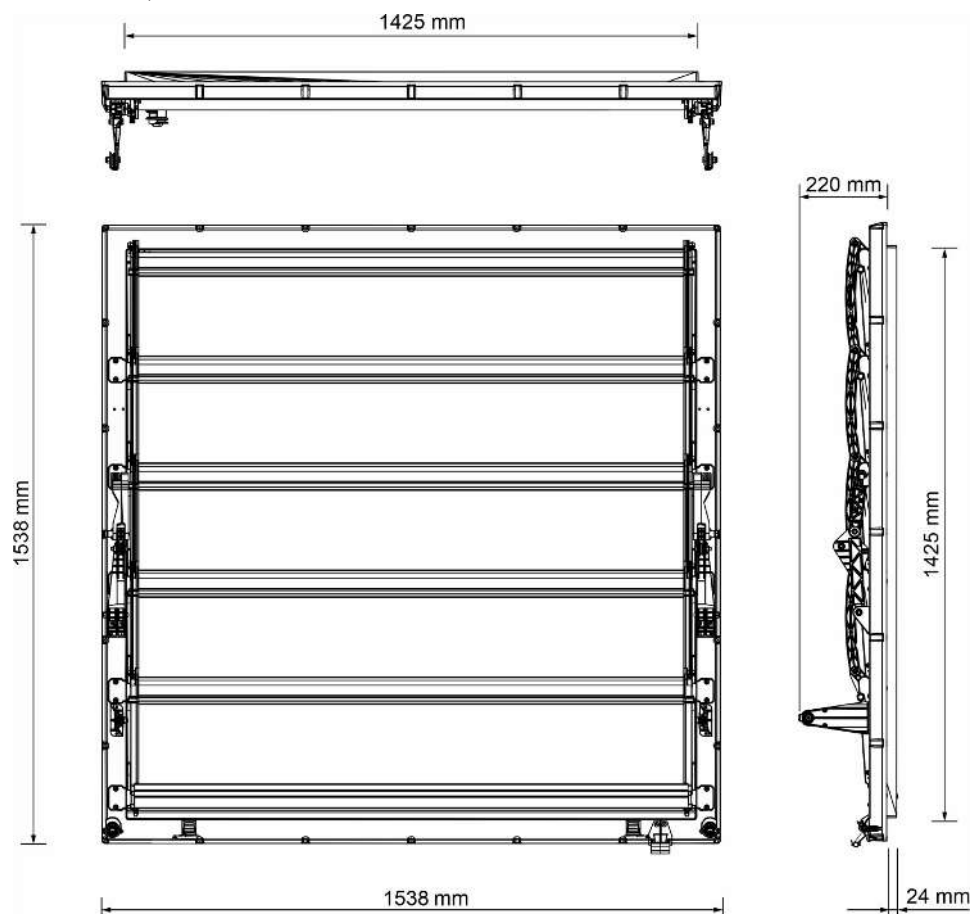
3.1 Dimensioned sketch

Dimensions in mm

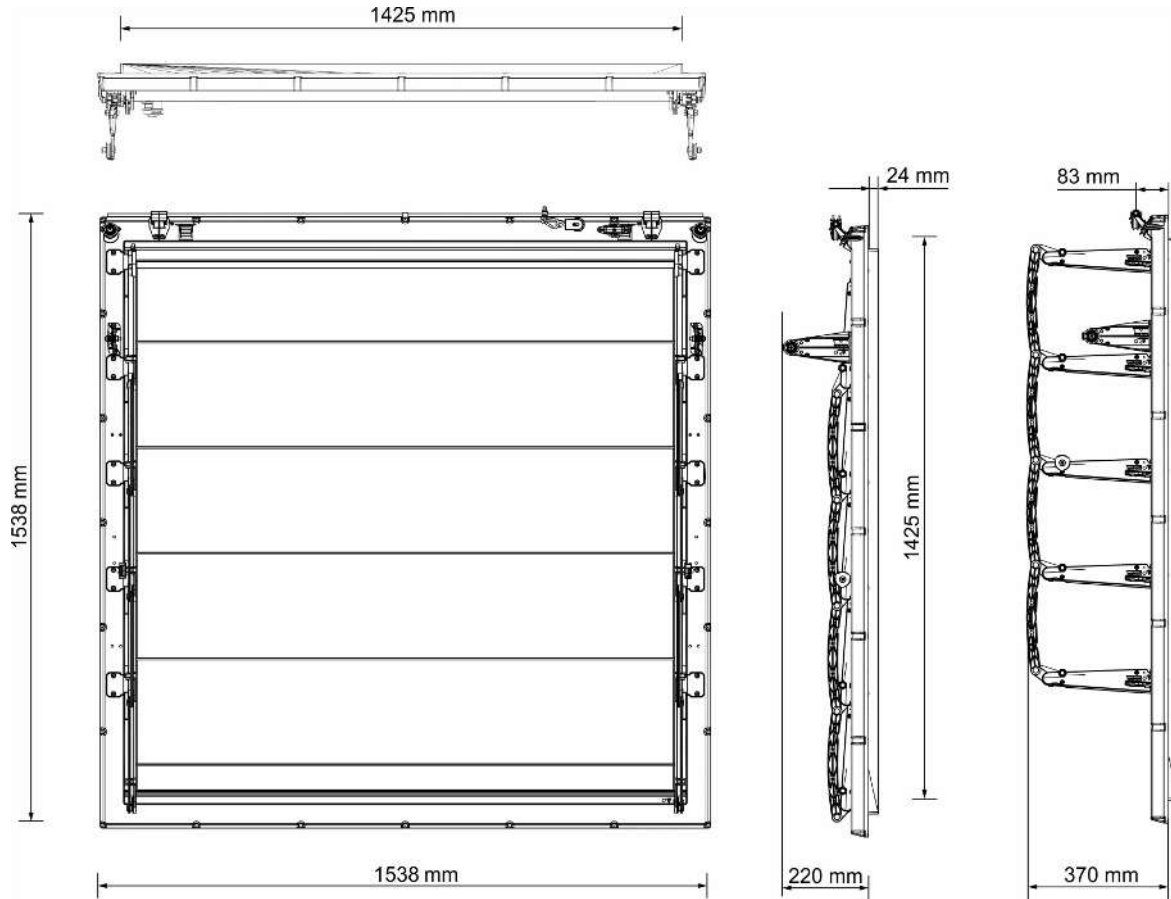
Hole dimensions for tunnel inlet.



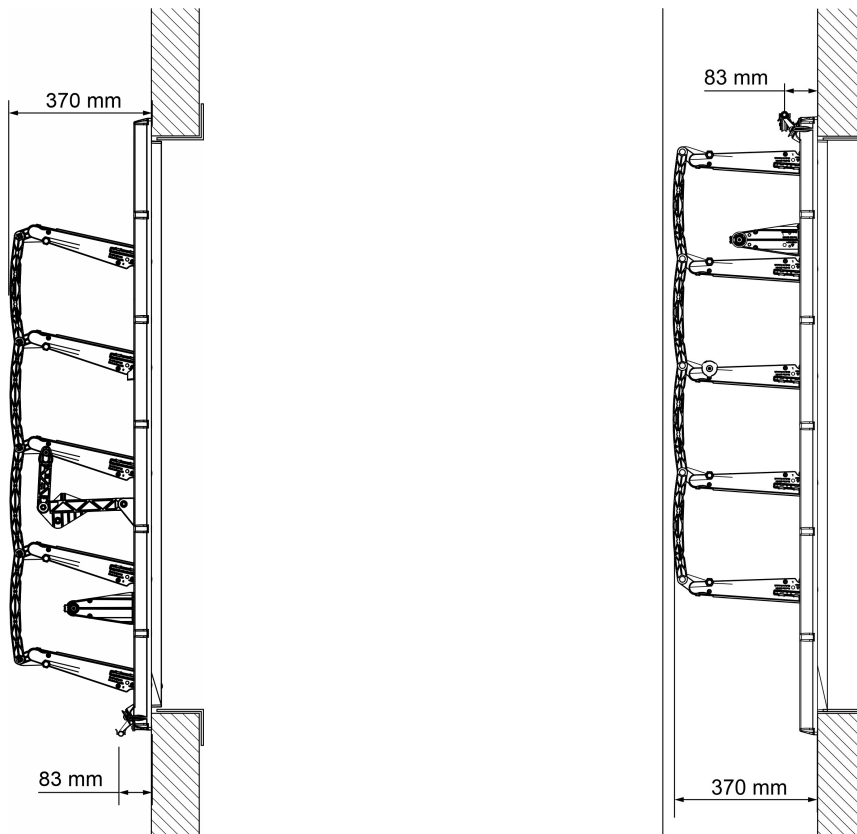
Dimensions for tunnel inlet, inside.



Dimensions for tunnel inlet, outside.



Dimensions for tunnel inlet mounted in the wall. Inside/outside.



SKOV A/S • Hedelund 4 • Glyngøre • DK-7870 Roslev
Tel. +45 72 17 55 55 • www.skov.com • E-mail: skov@skov.dk

