

Sub-pressure gauge

Technical Info

1 Product Description

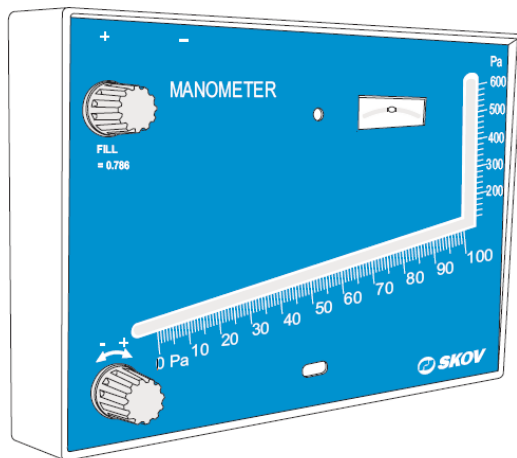
The sub-pressure gauge is used for reading of the pressure in the livestock house.

Construction is simple with virtually indestructible molded white styrene-acrylonitrile housing, indicating tube and fluid wells, molded ABS knobs and zero adjust plunger, shock mounted glass level vial and leak proof "O" ring seals. Scales are lithograph printed on aluminum and epoxy coated.

For stationary applications, the sub-pressure gauge can easily be mounted on any vertical surface with the two screws provided. A built in spirit level simplifies leveling.

Fill the reservoir, adjust fluid level to zero, connect the pitot tube, and it is ready for operation.

2 Product Survey



401990 Sub-pressure gauge

Includes:

- two tubing connectors for 1/8" pipe or sheet metal ducts
- two mounting screws
- 22ml bottle of indicating fluid
- red and green pointer flags
- 3m of tubing
- instructions

3 Technical Data

Measuring range	-1 mm 80mm
Measuring accuracy	+/- 3%
Oil gravity	0.826
Length	190mm
Height	153mm
Weight	215g

