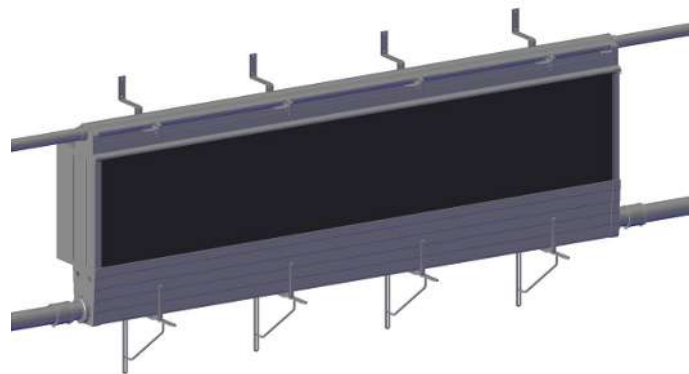
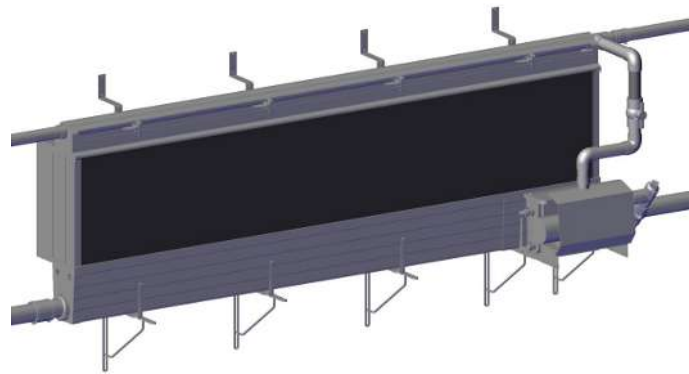


DA 150B-S Pad Cooling

Technical Info



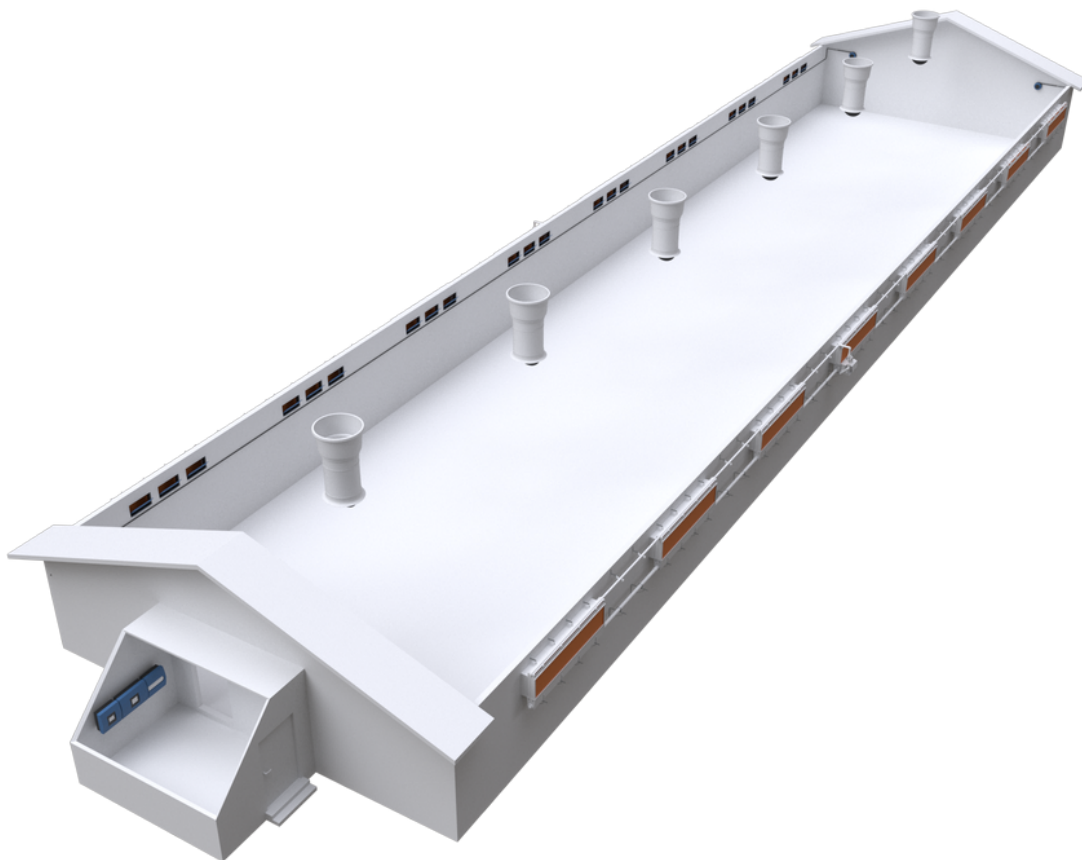
1 Product description

DA 150B-S pad cooling is used in livestock houses with Combi-Tunnel or LPV ventilation. The cooling takes place when fresh air passes through cooling pads kept moist by recirculating water into the system. The air passing through the pads is cooled and moistened.

Pad cooling for wall inlets is available in modules that fit one or more wall inlets in blocks. The plastic pad is very robust, UV resistant and easy to clean. Hence, no special water quality requirements are required.

DA 150B-S pad cooling is used when a high cooling capacity is required and wet housing equipment surfaces are not acceptable.

The pad cooling system is controlled from a BlueControl controller by means of a DOL 10 temperature sensor placed at the basic pad cooling module.



2 Product survey

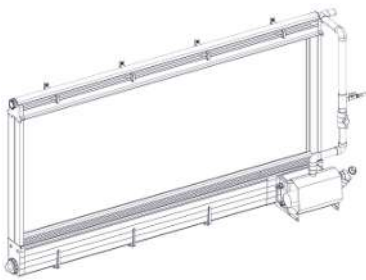
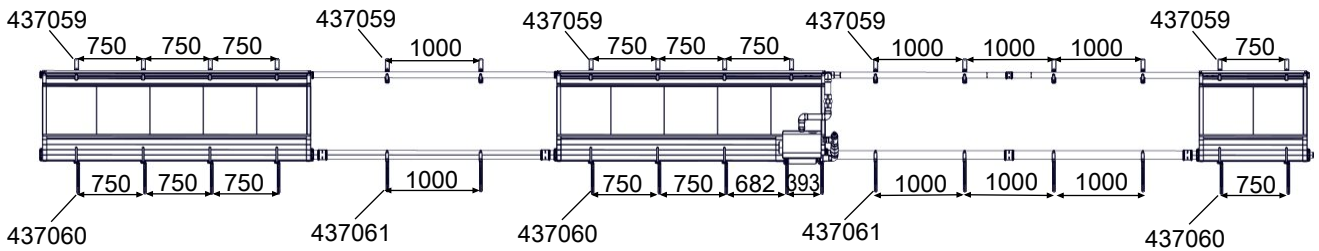
Pad cooling module 3 m
437828

2.5 m pipe
437056

Pad cooling module 3m with
437050

4 m pipe
437056 + 437057

Pad cooling module
437052



437050 DA 150B-S pad cool basic 3m 1X230V 50Hz

Pad cool basic 3m is a complete 3-meter pad cooling module.

Pad cool basic must be placed in the middle of the pad cooling system.

Includes:

- Supply unit including pump
- Center/end pieces
- Top pipe with pipe holder
- Bottom gutter with plastic brackets
- Non-return valve

Can cover the following number of wall inlets in 1 row:

- 1 for each 4 x DA 1200/DA 1211
- 1 for each 3 x DA 1911
- 1 for each 2 x DA 3800

Ordered separately:

- 437054 Pad PP 150x600x600
- 437055 Pad PP 150x600x1000
- 437059 DA 150B-S top bracket kit complete
- 437060 DA 150B-S pad cool gutter bracket complete
- 140246 DOL 10 temperature sensor



437828 DA 150B pad cool extension 3m

The 3-meter pad cooling extension is used in the pad cooling system with pad cool basic if multiple modules of 3 m are requested - besides the basic module - 437050.

The total length of the pad cooling system modules is max. 24 meter per pump exclusive of the pipe kit.

Includes:

- Center piece
- Top pipe with pipe holder
- Bottom gutter with plastic bracket

Can cover the following number of wall inlets in 1 row:

- 1 for each 4 x DA 1200/DA 1211
- 1 for each 3 x DA 1911
- 1 for each 2 x DA 3800

Ordered separately:

- 437054 Pad PP 150x600x600
- 437055 Pad PP 150x600x1000
- 437059 DA 150B-S top bracket kit complete
- 437060 DA 150B-S pad cool gutter bracket complete



437052 DA 150B-S pad cool module 1.2 m

The 1.2-meter pad cooling module is used in the pad cooling system with pad cool basic if modules of 1.2 m are requested.

Can also be used to extend a 3-meter pad cooling module.

The total length of the pad cooling modules is 24 meter per pump exclusive of the pipe kit.



Includes:

Center piece

Top pipe with pipe holder

Bottom gutter with plastic bracket

Can cover the following number of wall inlets in 1 row:

1 for each 1 x DA 1200/DA 1211

1 for each 1 x DA 1911

1 for each 1 x DA 3800

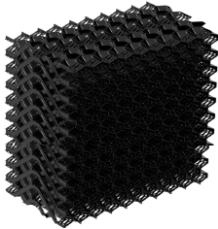
Ordered separately:

437054 Pad PP 150x600x600

437055 Pad PP 150x600x1000

437059 DA 150B-S top bracket kit complete

437060 DA 150B-S pad cool gutter bracket complete



437054 Pad PP 150x600x600

The plastic pad is very robust, UV resistant and easy to clean.

Can cover the following number of wall inlets in 1 row:

DA 1200/DA 1211

DA 1911

Order 1 per 600 mm pad cooling module.



437055 Pad PP 150x600x1000

The plastic pad is very robust, UV resistant and easy to clean.

Can cover the following number of wall inlets in 2 rows:

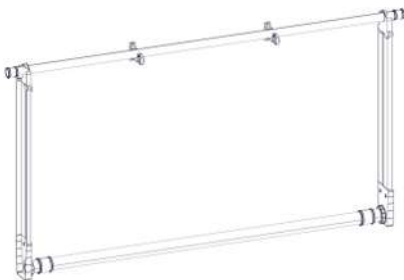
DA 1200/DA 1211

DA 1911

Can cover the following number of wall inlets in 1 row:

DA 3800

Order 1 per 600 mm pad cooling module.



437056 DA 150B-S pad cool pipe kit 2.5m

Pipe kit is used between the pad cooling modules at distances up to 2.5 m.

Includes:

End pieces

Top pipe 3 m incl. pipe holder and pipe couplings

ø89 bottom pipe 2.5 m with pipe couplings

Ordered separately:

437059 DA 150B-S top bracket kit complete

437061 DA 150B-S ø90 bracket kit complete



437057 DA 150B-S pad cool pipe kit extension 2.5 m

Pipe kit extension 2.5 m is used between the pad cooling modules at distances of 2.0 - 4.0 m. The distance between the pad cooling modules must be a maximum of 4 m.

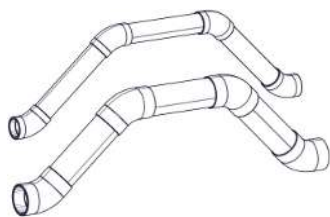
Includes:

Top pipe 3 m incl. pipe holder and pipe couplings
 ø89 bottom pipe 2.5 m with pipe couplings

Ordered separately:

437059 DA 150B-S top bracket kit complete

437061 DA 150B-S ø90 bracket kit complete



437058 DA 150B-S pad cool obstacle kit

The obstacle kit is used when the top and bottom pipes are to be routed around concrete pillars or rafters. Obstacle up to a width of 350 mm and a depth of 400 mm.

Includes:

3 x 2" top pipe 300 mm
 4 x 2" 45° elbow
 3 x ø89 bottom pipe 300 mm
 4 x ø89 45° elbow

Max. 4 obstacle kits on each side of the pump.



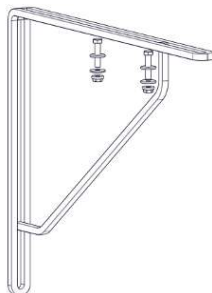
437059 DA 150B-S top bracket kit complete

The distance top bracket is used so the distance of 150 mm between the wall and the pad cooling module is maintained.

Complete with screws, washers, and nuts for mounting on top bracket. Wall mounting screws are not supplied.

Use 1 for each 750 mm at the pad cooling modules.

Use 1 for each 1000 mm at the pipes.

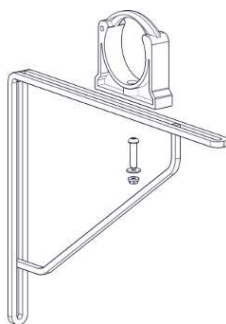


437060 DA 150B-S pad cool gutter bracket complete

The distance gutter bracket is used so the distance of 150 mm between the wall and the pad cooling module is maintained.

Complete with screws, washers, and nuts for mounting on plastic gutter bracket. Wall mounting screws are not supplied.

Use 1 for each 750 mm at the pad cooling modules.



437061 DA 150B-S ø90 bracket kit complete

The ø90 bracket kit is used so the distance of 150 mm between the wall and the ø89 pipe is maintained.

Includes:

Distance bracket
 ø90 pipe holder
 Screws, washers, and nuts for mounting on ø89 bottom pipe.

Wall mounting screws are not supplied.

Use 1 for each 1000 mm at the pipes.



437584 DA 150B glue kit - max. 12 m

Contains cleaning fluid, glue, and brushes for bonding the gutter system up to 12 meters.



140246 DOL 10 temperature sensor

Is used as pad cooling sensor. Must be placed between the cooling pad and the wall inlet.

Requires a version 8.3 software or later.

Cable length: 1.5 m.

1 per house.

3 Technical data

437371 DA 100B/150B pump 1x230V 50Hz		
Electrical		
Rated voltage	V AC	1x230 ± 10%
Operating voltage	V AC	207-253
Frequency	Hz	50
Power input P1	W	880
Power input P2	W	450
Max. current consumption	A	3.9
Capacitor	µF	25
Mechanical		
Suction/discharge	mm	40
Environment		
Max. ambient temperature	°C	40
Max. water temperature	°C	60
pH-range		6-9
Protection class	IP	55
Class of insulation		F

Total water supply to the system is 0.052 m³/h per m² pad.

For example, 1.25 m³/h for a pad cooling module of 24 m x 1.0 m (air velocity 1.5 m/s).

Total water supply to the system is 0.073 m³/h per m² pad.

For example, 1.75 m³/h for a pad cooling module of 24 m x 1.0 m (air velocity 2.0 m/s).

3.1 Load on wall/bracket

The wall must withstand up to 250 kg for every 3-meter pad cooling module.

Load per bracket when the brackets are mounted at a distance of 0.75 m		
Weight per top bracket	kg	20
Weight per bottom bracket	kg	60

SKOV A/S • Hedelund 4 • Glyngøre • DK-7870 Roslev
Tel. +45 72 17 55 55 • www.skov.com • E-mail: skov@skov.dk

