

DA 1800 CD Ceiling Inlet

Technical Info

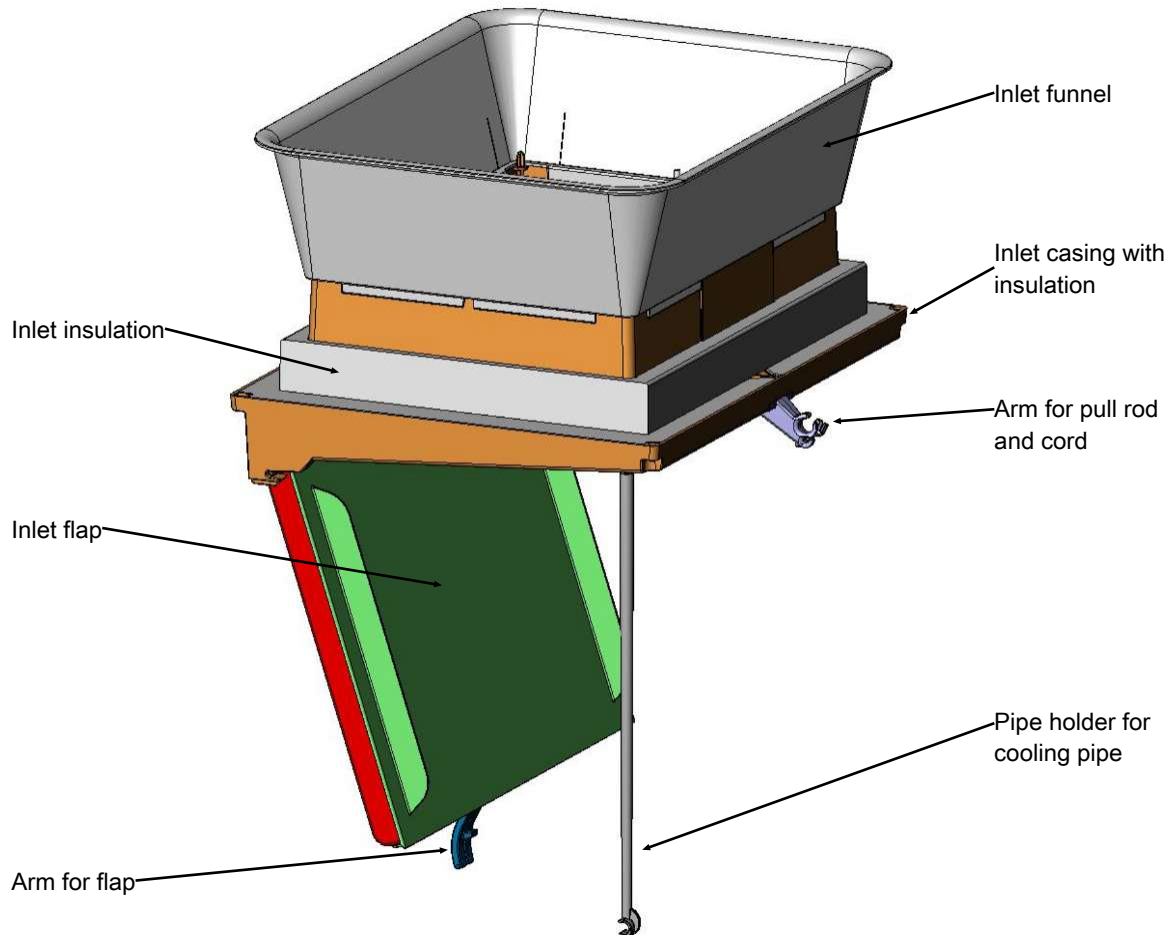


1 Product description

DA 1800 CD ceiling inlet is an efficient and compact fresh air inlet for supplementary ventilation in vapour-permeable ceiling constructions. The inlet opens by slackening the string.

The ceiling inlet is made of injection-moulded ABS which is dirt-repellent and easy to clean. The inlet is insulated with polystyrene in the inlet casing. The capacity is high with a max. output of 1800 m³/h at 10 Pa negative pressure.

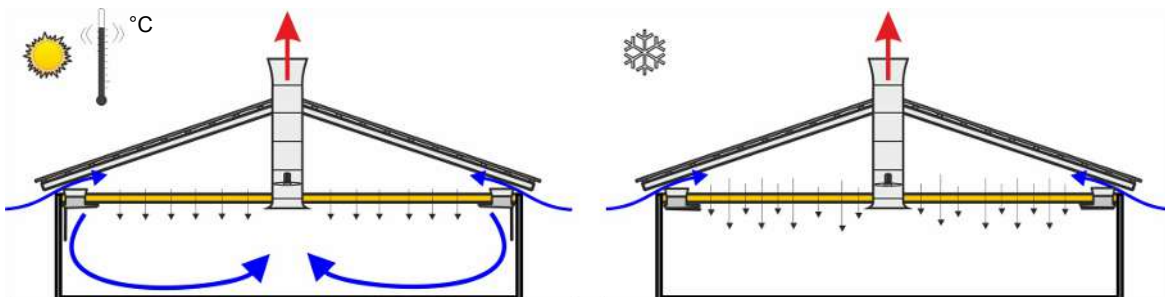
The inlet consists of 6 parts, arm for pull rod and string and arm for flap are mounted with screws, while pipe holder for cooling pipe is clicked into place.



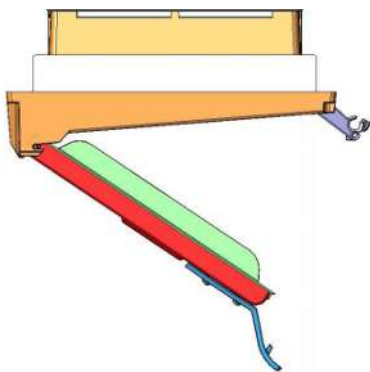
1.1 Principle of application

During hot periods with high ventilation requirements, a large air volume can be directed down into the animal zone.

During cold periods, the air is directed through the ceiling.



2 Product survey

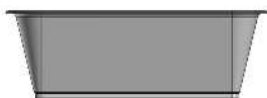


401361 DA 1800 ceiling inlet CD

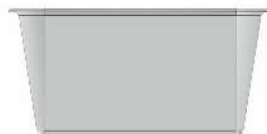
DA 1800 ceiling inlet is a universal air inlet, which brings fresh air into the house through the attic. DA 1800 is insulated and available as standard with a regulation set.

The inlet funnel must be ordered separately.

2.1 Accessories



401323 DA 1500/1800 inlet funnel - short



401337 DA 1540/1800 inlet funnel - long

The purpose of using the inlet funnel is partly to increase the incorporation height of the inlet to a total of 250/400 mm from the lower edge of the ceiling to the upper edge of the inlet funnel. Furthermore, the aerodynamic design of the inlet funnel ensures optimized inflow conditions which reduce the pressure loss and thus the energy loss at a given amount of air. This reduces the necessary negative pressure in the house.

Use one unit per inlet.



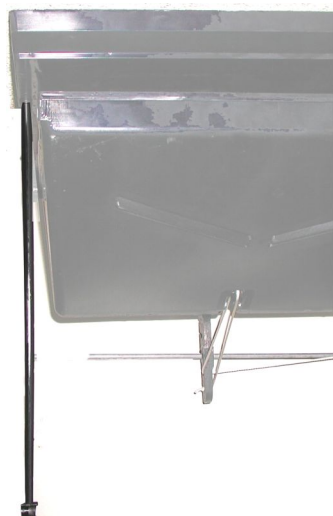
401364 DA 1540/1800 insert module

DA 1540/1800 insert module is used to reduce the air capacity in a single pen, often at the end of an inlet row.

The insert module can be used with or without the inlet funnel, the inlet funnel will not affect the capacity significantly.

The insertion module reduces air capacity by approximately 40% at a 50 cm inlet opening without inlet funnel.

Use one unit per inlet.



437482 DA 1500/1800 pipe holder

For DA 1540/1800 ceiling inlet a special pipe hanger has been developed, which can be used for securing high pressure cooling pipes from SKOV A/S, if high pressure cooling is installed. The pipe holder can only be used when the ceiling pitch is 0°.

If the distance between the inlets exceeds approx. 1.5 m supplement the inlet by item no. 437480 DA 1540/1800 pipe holder with adapter.

If the length of the cooling piping exceeds 40 m, the pressure impact from the start/stop of pump may cause breakage of the rather long pipe holder.

One per inlet.

**437480 DA 1540/1800 pipe holder with adapter - 0.5 m**

Used where extra support of the cooling pipe is required. Height approx. 49 cm which means that it is suited for the 437482 pipe holder for DA 1540/1800. The pipe holder can only be used when the ceiling pitch is 0°.

Mount it directly on the ceiling with the two screws supplied.

In Denmark one unit per 1.2 m free-hanging cooling pipe is used - corresponding to normal lath distance.

If the length of the cooling piping exceeds 40 m, the pressure impact from the start/stop of pump may cause breakage of the rather long pipe holder.

**401335 DA 1500/1800 holder for pullrod**

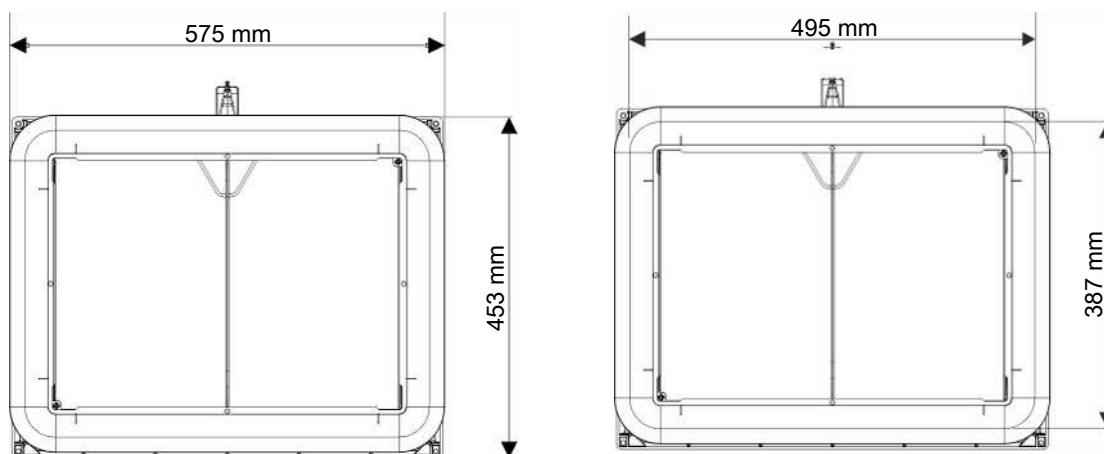
Is applied if the distance between the inlets exceeds 2m.

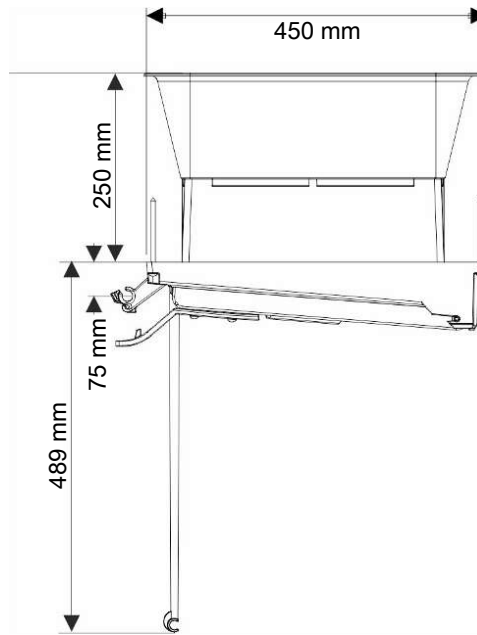
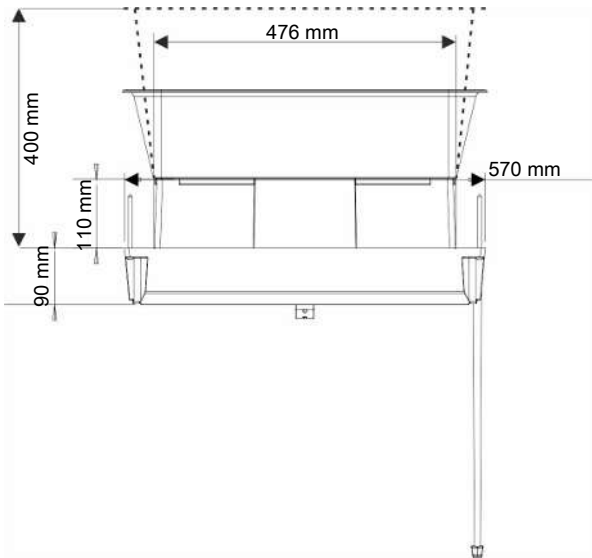
Mounted vertically with two screws in the ceiling.

3 Technical data

Mechanical				
Material		100% recyclable thermoplastic, high-impact material, dimensionally stable and UV stabilized		
Color		Black		
Air output				
90° inlet opening (550 mm)		Without insert module		With insert module
Differential pressure		Without inlet funnel	With inlet funnel	Without inlet funnel
-5 Pa	m ³ /h	950	1450	550
-10 Pa	m ³ /h	1300	2050	800
-20 Pa	m ³ /h	1850	2900	1150
-30 Pa	m ³ /h	2250	3500	1400
-40 Pa	m ³ /h	2600	4050	1600
Environment				
Temperature, operation	°C	-40 to +40		
Temperature, storage	°C	-40 to +65 – and protected against direct sunlight.		
Ambient humidity, operation	% RH	0-95% RH		
Shipment				
Weight	g	3700		

3.1 Dimensioned sketch





SKOV A/S • Hedelund 4 • Glyngøre • DK-7870 Roslev
Tel. +45 72 17 55 55 • www.skov.com • E-mail: skov@skov.dk

